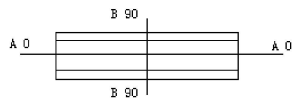
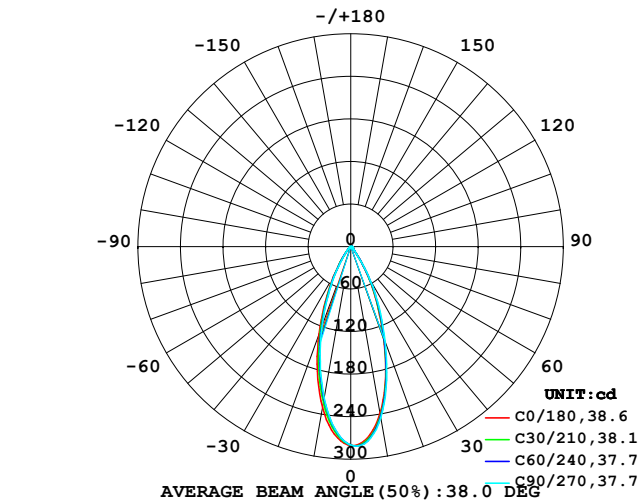


LUMINAIRE PHOTOMETRIC TEST REPORT

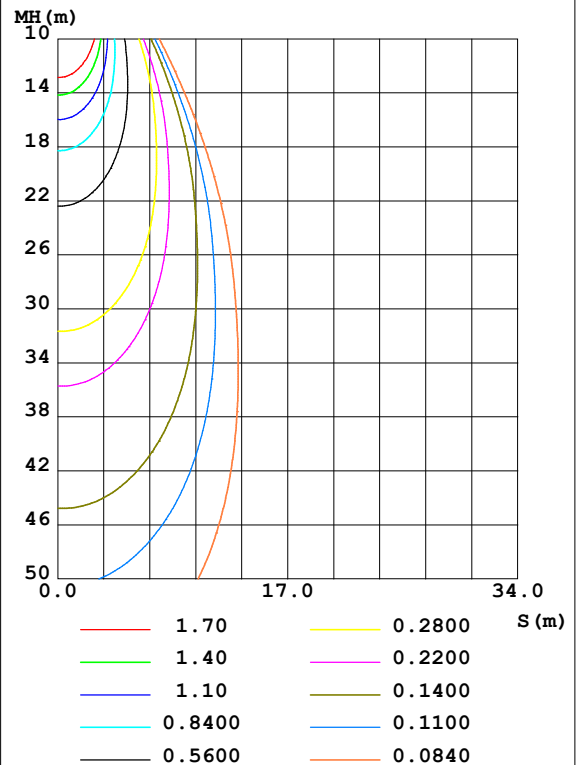
Test:U:24.00V I:0.102A P:2.45W PF:1.000 Freq:0Hz Lamp Flux:139.876x1 lm		
NAME: DE12CTWWS-2700K	TYPE:	WEIGHT:
SPEC.:	DIM.:	SERIAL No.: 2025062303
MFR.:	SUR.:	Shielding Angle:

DATA OF LAMP		PHOTOMETRIC DATA Eff: 57.14 lm/W			
MODEL		I _{max} (cd)	281.6	S/MH (C0/180)	0.62
NOMINAL POWER (W)		LOR (%)	100.0	S/MH (C90/270)	0.57
RATED VOLTAGE (V)	24	TOTAL FLUX (lm)	139.88	η UP, DN (C0-180)	0.0, 53.4
NOMINAL FLUX (lm)	139.876	CIE CLASS	DIRECT	η UP, DN (C180-360)	0.0, 46.6
LAMPS INSIDE	1	η up (%)	0.0	CIBSE SHR NOM	0.50
TEST VOLTAGE (V)	24	η down (%)	100.0	CIBSE SHR MAX	0.65

LUMINOUS INTENSITY DISTRIBUTION DIAGRAM



C0 PLANE ISOLUX DIAGRAM (UNIT:lx)



C Range: 0 - 360DEG
C Interval: 15.0DEG
Test Speed: HIGH
Temperature: 25DEG
Operators: SENPU
Test Date: 2025-06-21

γ Range: 0 - 100DEG
γ Interval: 1.0DEG
Test System: EVERFINE GO-2000B_V1 SYSTEM V2.00.444
Humidity: 61%
Test Distance: 8.000m [K=1.0000]
Remarks:

ZONAL FLUX DIAGRAM

ZONAL FLUX DIAGRAM:

γ	C0	C45	C90	C135	C180	C225	C270	C315	γ	Φ zone	Φ total	%lum,lamp
10	238.9	245.2	245.1	246.4	230.4	217.7	216.8	220.2	0- 10	24.39	24.39	17.4,17.4
20	135.3	139.6	141.2	145.6	131.4	120.9	118.5	120.5	10- 20	50.43	74.82	53.5,53.5
30	50.96	56.58	56.81	58.69	48.79	44.08	42.57	43.32	20- 30	39.44	114.3	81.7,81.7
40	9.738	10.30	10.29	10.96	10.50	10.12	9.496	8.956	30- 40	15.64	129.9	92.9,92.9
50	3.690	3.667	3.908	3.781	3.667	3.664	3.580	3.541	40- 50	4.595	134.5	96.2,96.2
60	2.084	2.047	2.224	2.143	2.056	2.084	1.951	2.006	50- 60	2.463	137.0	97.9,97.9
70	1.299	1.255	1.430	1.368	1.246	1.256	1.106	1.186	60- 70	1.631	138.6	99.1,99.1
80	0.2791	0.6354	0.7416	0.7142	0.1826	0.6106	0.5135	0.5583	70- 80	0.9617	139.5	99.8,99.8
90	0.0959	0.1134	0.1046	0.1220	0	0	0	0.0087	80- 90	0.2586	139.8	100,100
100	0.1046	0.1220	0.1307	0.1307	0	0	0	0	90-100	0.0649	139.9	100,100
110	0	0	0	0	0	0	0	0	100-110	0.0033	139.9	100,100
120	0	0	0	0	0	0	0	0	110-120	0	139.9	100,100
130	0	0	0	0	0	0	0	0	120-130	0	139.9	100,100
140	0	0	0	0	0	0	0	0	130-140	0	139.9	100,100
150	0	0	0	0	0	0	0	0	140-150	0	139.9	100,100
160	0	0	0	0	0	0	0	0	150-160	0	139.9	100,100
170	0	0	0	0	0	0	0	0	160-170	0	139.9	100,100
180	0	0	0	0	0	0	0	0	170-180	0	139.9	100,100
DEG	LUMINOUS INTENSITY:cd									UNIT:lm		

Conical surface Flux(90deg): 132.66 lm

%lum = 94.8%

%lamp = 94.8%

Conical surface Flux(120deg): 136.96 lm

%lum = 97.9%

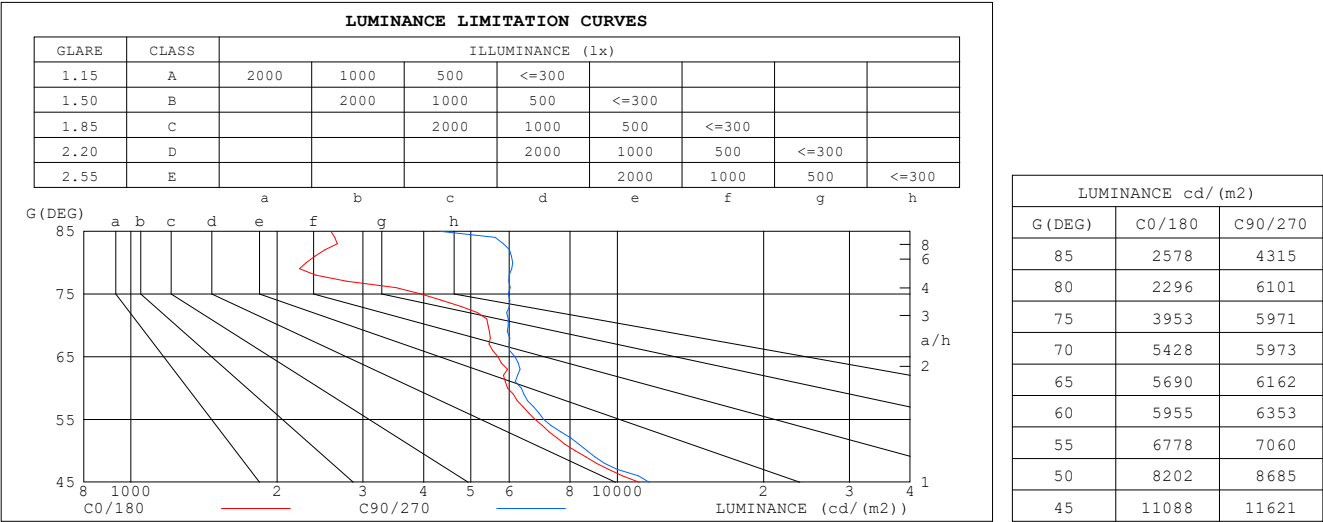
%lamp = 97.9%

C Range: 0 - 360DEG
C Interval: 15.0DEG
Test Speed: HIGH
Temperature:25DEG
Operators:SENPU
Test Date:2025-06-21

γ Range: 0 - 100DEG
 γ Interval: 1.0DEG
Test System:EVERFINE GO-2000B_V1 SYSTEM V2.00.444
Humidity:61%
Test Distance:8.000m [K=1.0000]
Remarks:

LUMINANCE LIMITATION CURVES

Test:U:24.00V I:0.102A P:2.45W PF:1.000 Freq:0Hz Lamp Flux:139.876x1 lm		
NAME: DE12CTWWS-2700K	TYPE:	WEIGHT:
SPEC.:	DIM.:	SERIAL No.: 2025062303
MFR.:	SUR.:	Shielding Angle:



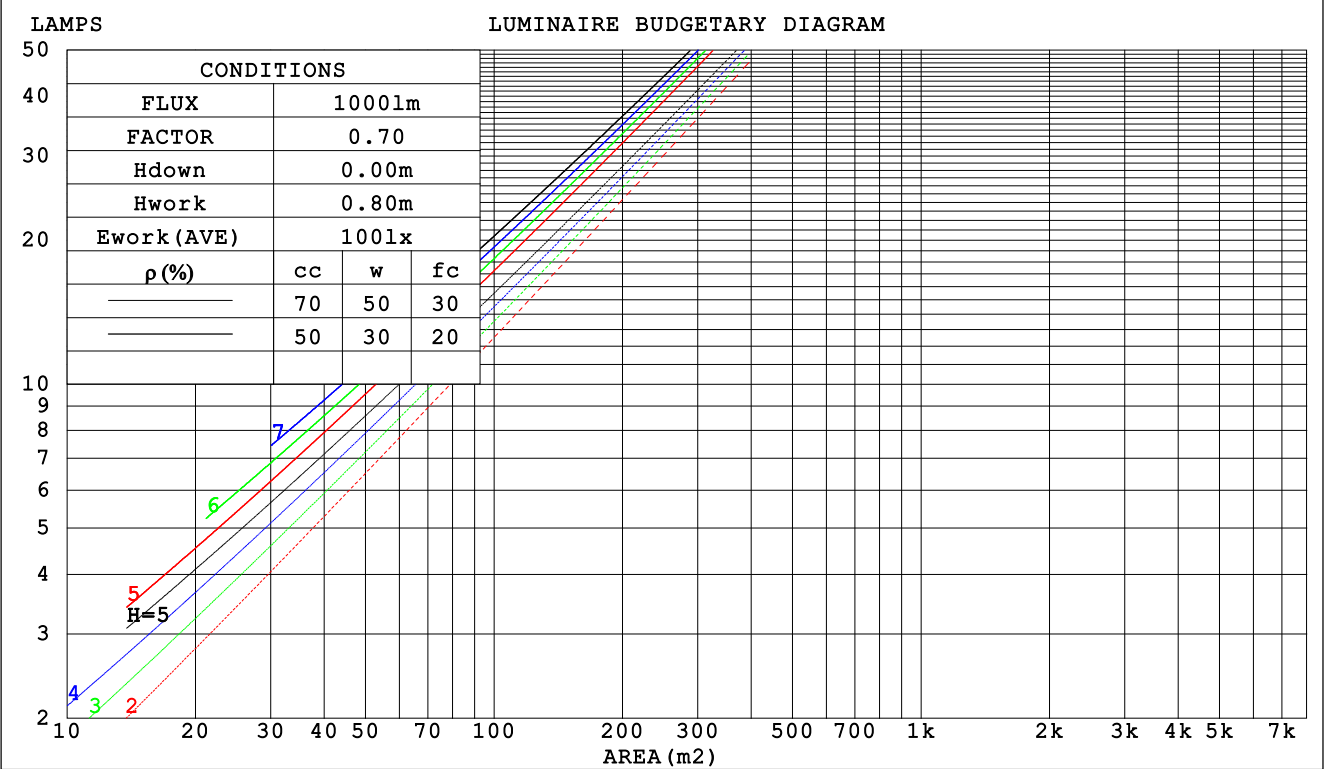
C Range: 0 - 360DEG
C Interval: 15.0DEG
Test Speed: HIGH
Temperature:25DEG
Operators:SENPU
Test Date:2025-06-21

γ Range: 0 - 100DEG
γ Interval: 1.0DEG
Test System:EVERFINE GO-2000B_V1 SYSTEM V2.00.444
Humidity:61%
Test Distance:8.000m [K=1.0000]
Remarks:

CU AND LUMINAIRE BUDGETARY ESTIMATE DIAGRAM

Test:U:24.00V I:0.102A P:2.45W PF:1.000 Freq:0Hz		
Lamp Flux:139.876x1 lm		
NAME: DE12CTWWS-2700K	TYPE:	WEIGHT:
SPEC.:	DIM.:	SERIAL No.: 2025062303
MFR.:	SUR.:	Shielding Angle:

pcc	80%			70%			50%			30%			10%			0
pw	50%	30%	10%	50%	30%	10%	50%	30%	10%	50%	30%	10%	50%	30%	10%	0
pfc	20%			20%			20%			20%			20%			0
RCR	RCR:Room Cavity Ratio						Coefficients of Utilization(CU)									
0.0	1.19	1.19	1.19	1.16	1.16	1.16	1.11	1.11	1.11	1.06	1.06	1.06	1.02	1.02	1.02	.00
1.0	1.11	1.09	1.07	1.09	1.07	1.05	1.05	1.03	1.02	1.01	.00	.99	.98	.97	.96	.94
2.0	1.04	1.00	.97	1.02	.99	.96	.99	.96	.94	.96	.94	.92	.93	.92	.90	.88
3.0	.98	.93	.89	.96	.92	.89	.94	.90	.87	.91	.88	.86	.89	.87	.85	.83
4.0	.92	.87	.83	.91	.86	.83	.89	.85	.82	.87	.84	.81	.85	.82	.80	.79
5.0	.87	.82	.78	.86	.81	.78	.85	.80	.77	.83	.79	.76	.81	.78	.76	.74
6.0	.83	.77	.73	.82	.77	.73	.81	.76	.73	.79	.75	.72	.78	.74	.72	.70
7.0	.79	.73	.70	.78	.73	.69	.77	.72	.69	.76	.72	.69	.75	.71	.68	.67
8.0	.75	.70	.66	.75	.69	.66	.73	.69	.66	.72	.68	.65	.72	.68	.65	.64
9.0	.72	.66	.63	.71	.66	.63	.70	.66	.62	.69	.65	.62	.69	.65	.62	.61
10.0	.69	.63	.60	.68	.63	.60	.67	.63	.60	.67	.62	.60	.66	.62	.59	.58



C Range: 0 - 360DEG
C Interval: 15.0DEG
Test Speed: HIGH
Temperature:25DEG
Operators:SENPU
Test Date:2025-06-21

γ Range: 0 - 100DEG
γ Interval: 1.0DEG
Test System:EVERFINE GO-2000B_V1 SYSTEM V2.00.444
Humidity:61%
Test Distance:8.000m [K=1.0000]
Remarks:

WEC AND CCEC

Test:U:24.00V I:0.102A P:2.45W PF:1.000 Freq:0Hz Lamp Flux:139.876x1 lm		
NAME: DE12CTWWS-2700K	TYPE:	WEIGHT:
SPEC.:	DIM.:	SERIAL No.: 2025062303
MFR.:	SUR.:	Shielding Angle:

pcc	80%			70%			50%			30%			10%			0	
pw	50%	30%	10%	50%	30%	10%	50%	30%	10%	50%	30%	10%	50%	30%	10%	0	
pfc	20%			20%			20%			20%			20%			0	
RCR	RCR:Room Cavity Ratio						Wall Exitance Coefficients (WEC)										
0.0																	
1.0	.171	.097	.031	.164	.094	.030	.152	.087	.028	.140	.081	.026	.129	.075	.024		
2.0	.161	.088	.027	.156	.086	.026	.145	.081	.025	.135	.076	.024	.126	.071	.023		
3.0	.152	.081	.024	.147	.079	.024	.138	.075	.023	.130	.071	.022	.122	.068	.021		
4.0	.143	.074	.022	.139	.073	.022	.132	.070	.021	.124	.067	.020	.118	.064	.019		
5.0	.136	.069	.020	.132	.068	.020	.125	.065	.019	.119	.063	.019	.114	.061	.018		
6.0	.129	.065	.018	.126	.063	.018	.120	.061	.018	.114	.059	.017	.109	.058	.017		
7.0	.123	.061	.017	.120	.060	.017	.115	.058	.017	.110	.056	.016	.105	.055	.016		
8.0	.117	.057	.016	.115	.056	.016	.110	.055	.016	.106	.054	.015	.102	.052	.015		
9.0	.112	.054	.015	.110	.053	.015	.106	.052	.015	.102	.051	.015	.098	.050	.014		
10.0	.107	.051	.014	.105	.051	.014	.102	.050	.014	.098	.049	.014	.095	.048	.014		

pcc	80%			70%			50%			30%			10%			0
pw	50%	30%	10%	50%	30%	10%	50%	30%	10%	50%	30%	10%	50%	30%	10%	0
pfc	20%			20%			20%			20%			20%			0
RCR	RCR:Room Cavity Ratio						Ceiling Cavity Exitance Coefficients(CCEC)									
0.0	.191	.191	.191	.163	.163	.163	.111	.111	.111	.064	.064	.064	.020	.020	.020	
1.0	.171	.158	.146	.146	.135	.125	.100	.093	.087	.058	.054	.050	.018	.017	.016	
2.0	.155	.133	.114	.133	.114	.099	.091	.079	.069	.053	.046	.040	.017	.015	.013	
3.0	.142	.114	.091	.122	.098	.079	.084	.068	.056	.048	.040	.033	.016	.013	.011	
4.0	.131	.099	.074	.113	.086	.065	.077	.060	.046	.045	.035	.027	.014	.011	.009	
5.0	.122	.087	.062	.105	.075	.054	.072	.053	.038	.042	.031	.022	.013	.010	.007	
6.0	.114	.078	.052	.098	.067	.045	.068	.047	.032	.039	.028	.019	.013	.009	.006	
7.0	.107	.070	.044	.092	.061	.038	.064	.043	.027	.037	.025	.016	.012	.008	.005	
8.0	.101	.064	.038	.087	.055	.033	.060	.039	.023	.035	.023	.014	.011	.007	.005	
9.0	.096	.058	.033	.082	.051	.029	.057	.036	.020	.033	.021	.012	.011	.007	.004	
10.0	.091	.054	.029	.078	.047	.025	.054	.033	.018	.032	.019	.011	.010	.006	.004	

C Range: 0 - 360DEG
C Interval: 15.0DEG
Test Speed: HIGH
Temperature:25DEG
Operators:SENPU
Test Date:2025-06-21

γ Range: 0 - 100DEG
γ Interval: 1.0DEG
Test System:EVERFINE GO-2000B_V1 SYSTEM V2.00.444
Humidity:61%
Test Distance:8.000m [K=1.0000]
Remarks:

UGR(Unified Glare Rating) Table

Test:U:24.00V I:0.102A P:2.45W PF:1.000 Freq:0Hz Lamp Flux:139.876x1 lm										
NAME: DE12CTWWS-2700K					TYPE:			WEIGHT:		
SPEC.:					DIM.:			SERIAL No.: 2025062303		
MFR.:					SUR.:			Shielding Angle:		
ceiling/cavity	0.7	0.7	0.5	0.5	0.3	0.7	0.7	0.5	0.5	0.3
walls	0.5	0.3	0.5	0.3	0.3	0.5	0.3	0.5	0.3	0.3
working plane	0.2	0.2	0.2	0.2	0.2	0.2	0.2	0.2	0.2	0.2
Room dimensions	Viewed crosswise					Viewed endwise				
x = 2H y = 2H	15.8	16.7	16.0	16.8	17.0	16.2	17.0	16.4	17.2	17.3
3H	16.1	16.9	16.4	17.1	17.3	16.5	17.3	16.8	17.5	17.7
4H	16.3	17.1	16.6	17.3	17.5	16.8	17.5	17.0	17.7	18.0
6H	16.3	17.0	16.6	17.3	17.5	17.0	17.7	17.3	17.9	18.2
8H	16.3	17.0	16.6	17.3	17.5	17.1	17.8	17.4	18.0	18.3
12H	16.3	17.0	16.6	17.3	17.5	17.1	17.8	17.4	18.1	18.3
4H 2H	15.8	16.6	16.1	16.8	17.0	16.2	16.9	16.4	17.1	17.4
3H	16.4	17.0	16.7	17.3	17.6	16.7	17.4	17.0	17.6	17.9
4H	16.6	17.2	17.0	17.5	17.8	17.1	17.7	17.4	18.0	18.3
6H	16.8	17.3	17.2	17.7	18.0	17.4	17.9	17.8	18.3	18.6
8H	16.8	17.3	17.2	17.7	18.0	17.5	18.0	17.9	18.4	18.8
12H	16.8	17.3	17.3	17.7	18.1	17.6	18.1	18.0	18.4	18.8
8H 4H	16.7	17.2	17.1	17.6	17.9	17.1	17.6	17.5	18.0	18.3
6H	17.0	17.5	17.5	17.8	18.3	17.6	18.0	18.0	18.4	18.8
8H	17.2	17.5	17.6	18.0	18.4	17.8	18.2	18.3	18.6	19.0
12H	17.2	17.5	17.7	18.0	18.4	17.9	18.2	18.4	18.7	19.1
12H 4H	16.7	17.2	17.1	17.6	17.9	17.1	17.6	17.5	17.9	18.3
6H	17.1	17.4	17.5	17.9	18.3	17.6	18.0	18.1	18.4	18.8
8H	17.2	17.6	17.7	18.0	18.5	17.9	18.2	18.3	18.6	19.1
Variations with the observer position at spacings(CIE Pub.117):										
S = 1.0H	+ 1.2 / - 1.2					+ 1.1 / - 1.2				
1.5H	+ 2.4 / - 0.9					+ 2.2 / - 1.0				
2.0H	+ 1.1 / - 0.6					+ 1.2 / - 0.5				

CIE Pub.117, 139.9 lm Total Lamp Luminous Flux Corrected ($8\log(F/F_0) = -6.8$)
Area: 0.0007 m²

C Range: 0 - 360DEG
C Interval: 15.0DEG
Test Speed: HIGH
Temperature:25DEG
Operators:SENPU
Test Date:2025-06-21

γ Range: 0 - 100DEG
 γ Interval: 1.0DEG
Test System:EVERFINE GO-2000B_V1 SYSTEM V2.00.444
Humidity:61%
Test Distance:8.000m [K=1.0000]
Remarks:

UTILIZATION FACTORS TABLE

Test:U:24.00V I:0.102A P:2.45W PF:1.000 Freq:0Hz Lamp Flux:139.876x1 lm		
NAME: DE12CTWWS-2700K	TYPE:	WEIGHT:
SPEC.:	DIM.:	SERIAL No.: 2025062303
MFR.:	SUR.:	Shielding Angle:

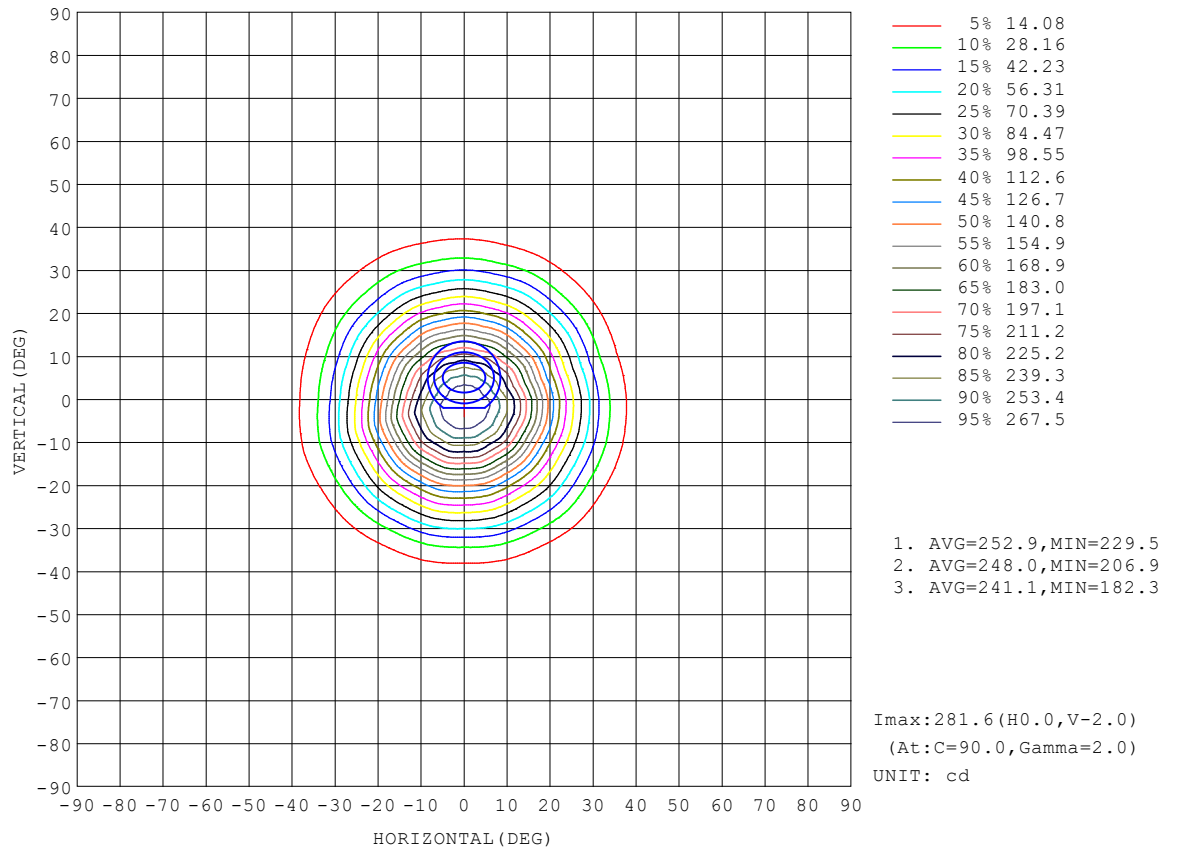
REFLECTANCE										
Ceiling	0.8	0.8	0.8	0.7	0.7	0.7	0.5	0.5	0.5	0
Walls	0.7	0.5	0.3	0.7	0.5	0.3	0.7	0.5	0.3	0
Working plane	0.2	0.2	0.2	0.2	0.2	0.2	0.2	0.2	0.2	0
ROOM INDEX	UTILIZATION FACTORS (PERCENT) $k(RI) \times RCR = 5$									
$k = 0.60$	87	81	77	87	81	77	86	80	77	73
0.80	94	89	85	94	88	85	93	88	84	81
1.00	99	93	90	98	93	89	96	93	89	85
1.25	103	98	94	102	97	94	100	96	93	89
1.50	106	101	97	104	100	97	102	98	96	91
2.00	108	104	101	107	103	100	104	101	98	93
2.50	110	106	103	108	105	102	105	102	100	94
3.00	112	108	105	110	107	104	106	104	102	96
4.00	114	111	109	112	109	107	108	106	104	97
5.00	115	113	111	113	111	109	109	107	106	98
ROOM INDEX	UF (total)									Direct
According to DIN EN 13032-2 2004			Suspended					SHRNOM = 1.25		

C Range: 0 - 360DEG
 C Interval: 15.0DEG
 Test Speed: HIGH
 Temperature: 25DEG
 Operators: SENPU
 Test Date: 2025-06-21

γ Range: 0 - 100DEG
 γ Interval: 1.0DEG
 Test System: EVERFINE GO-2000B_V1 SYSTEM V2.00.444
 Humidity: 61%
 Test Distance: 8.000m [K=1.0000]
 Remarks:

ISOCANDELA DIAGRAM

Test:U:24.00V I:0.102A P:2.45W PF:1.000 Freq:0Hz Lamp Flux:139.876x1 lm		
NAME: DE12CTWWS-2700K	TYPE:	WEIGHT:
SPEC.:	DIM.:	SERIAL No.: 2025062303
MFR.:	SUR.:	Shielding Angle:

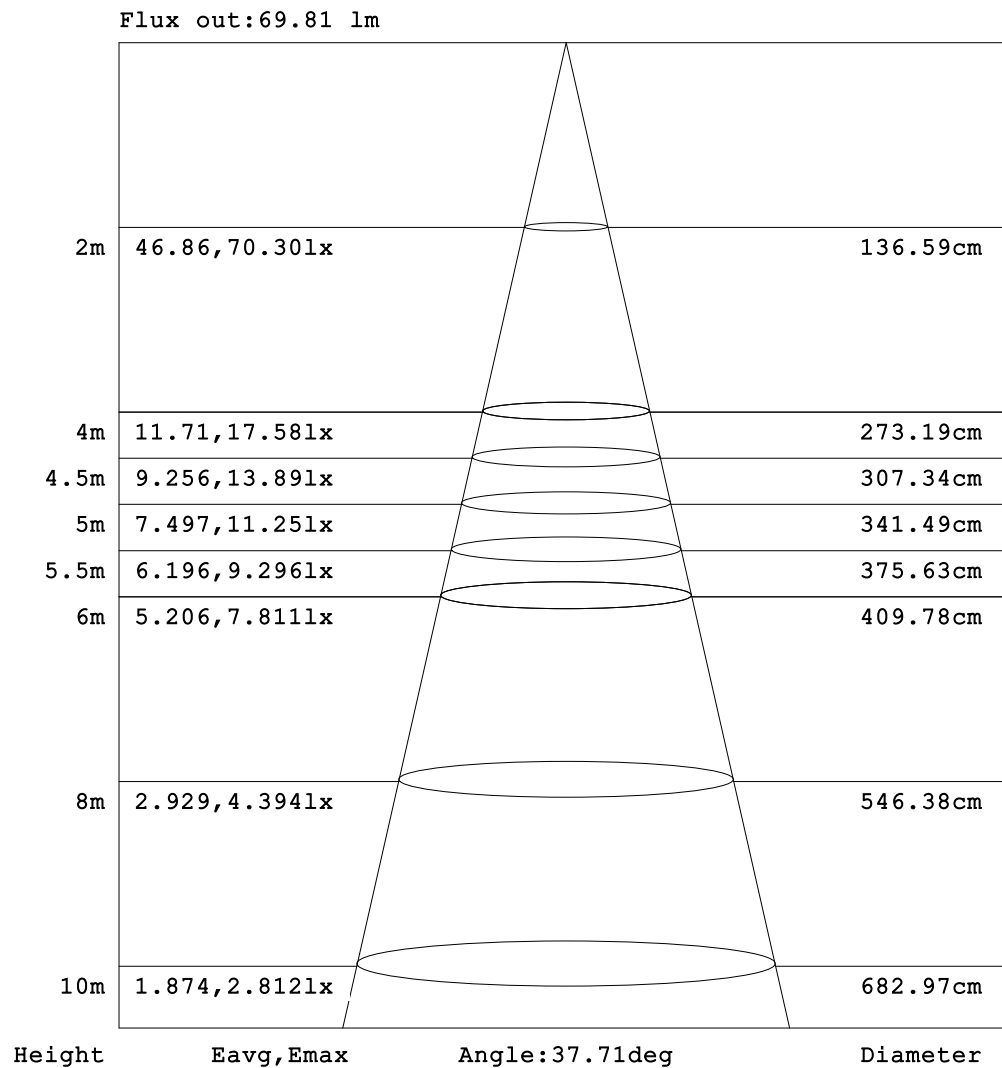


C Range: 0 - 360DEG
C Interval: 15.0DEG
Test Speed: HIGH
Temperature:25DEG
Operators:SENPU
Test Date:2025-06-21

γ Range: 0 - 100DEG
 γ Interval: 1.0DEG
Test System:EVERFINE GO-2000B_V1 SYSTEM V2.00.444
Humidity:61%
Test Distance:8.000m [K=1.0000]
Remarks:

AAI Figure

Test:U:24.00V I:0.102A P:2.45W PF:1.000 Freq:0Hz Lamp Flux:139.876x1 lm		
NAME: DE12CTWWS-2700K	TYPE:	WEIGHT:
SPEC.:	DIM.:	SERIAL No.: 2025062303
MFR.:	SUR.:	Shielding Angle:



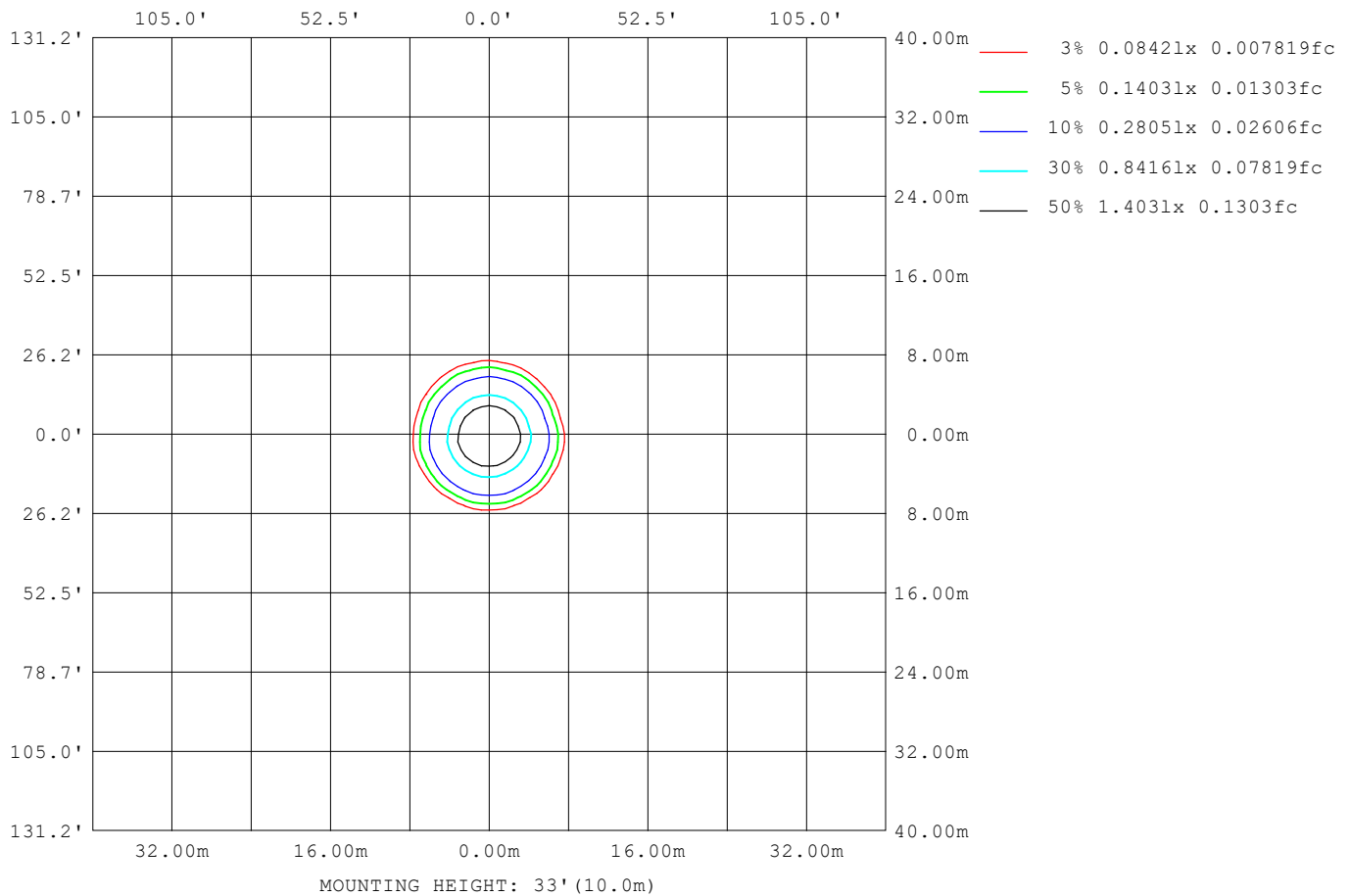
Note: The Curves indicate the illuminated area and the average illumination when the luminaire is at different distance.

C Range: 0 - 360DEG
C Interval: 15.0DEG
Test Speed: HIGH
Temperature: 25DEG
Operators: SENPU
Test Date: 2025-06-21

γ Range: 0 - 100DEG
γ Interval: 1.0DEG
Test System: EVERFINE GO-2000B_V1 SYSTEM V2.00.444
Humidity: 61%
Test Distance: 8.000m [K=1.0000]
Remarks:

ISOLUX DIAGRAM

Test:U:24.00V I:0.102A P:2.45W PF:1.000 Freq:0Hz Lamp Flux:139.876x1 lm		
NAME: DE12CTWWS-2700K	TYPE:	WEIGHT:
SPEC.:	DIM.:	SERIAL No.: 2025062303
MFR.:	SUR.:	Shielding Angle:



C Range: 0 - 360DEG
C Interval: 15.0DEG
Test Speed: HIGH
Temperature:25DEG
Operators:SENPU
Test Date:2025-06-21

γ Range: 0 - 100DEG
 γ Interval: 1.0DEG
 γ Test System:EVERFINE GO-2000B_V1 SYSTEM V2.00.444
Humidity:61%
Test Distance:8.000m [K=1.0000]
Remarks:

LED Avg.L Report

Test:U:24.00V I:0.102A P:2.45W PF:1.000 Freq:0Hz Lamp Flux:139.876x1 lm		
NAME: DE12CTWWS-2700K	TYPE:	WEIGHT:
SPEC.:	DIM.:	SERIAL No.: 2025062303
MFR.:	SUR.:	Shielding Angle:

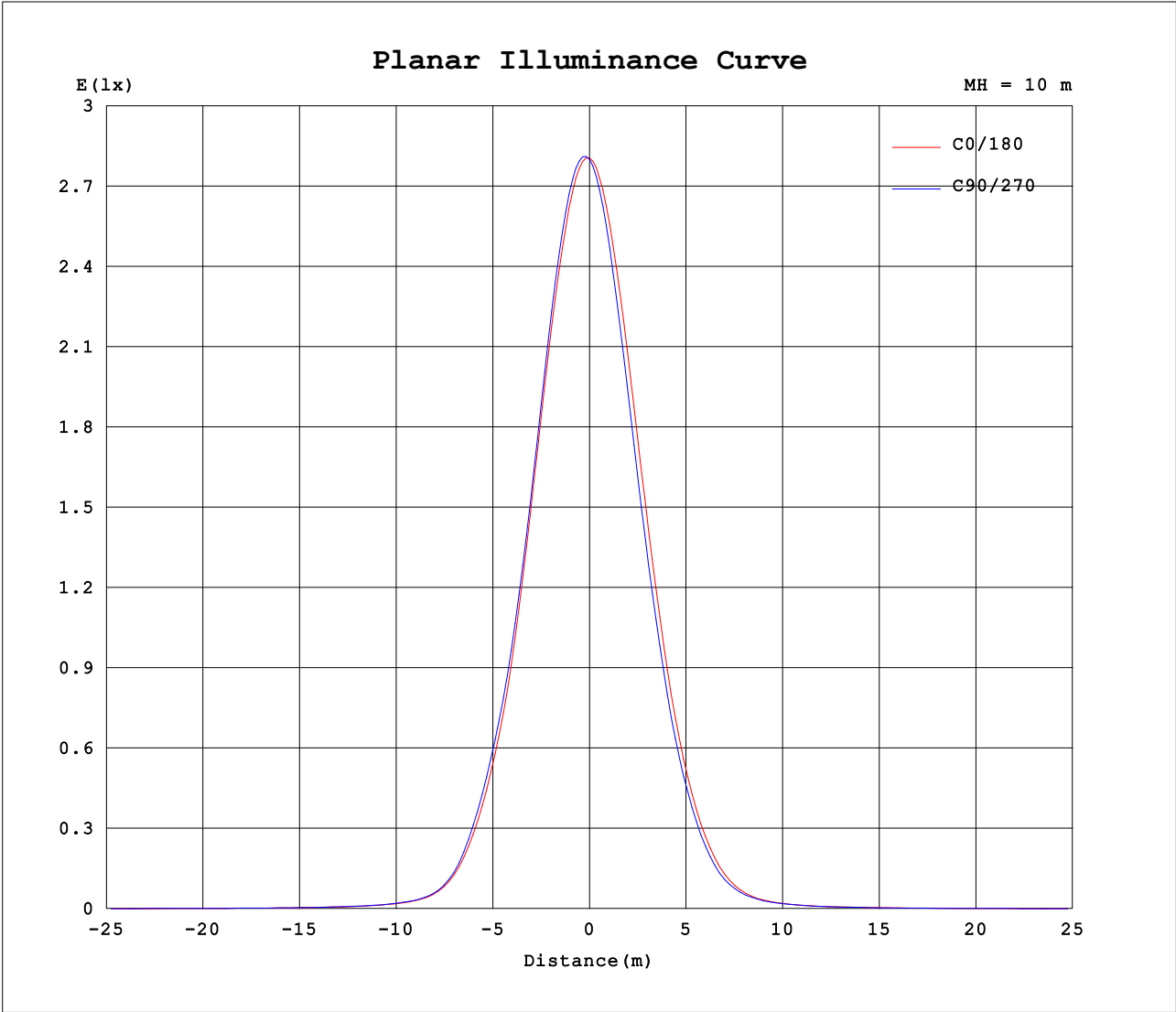
AvgL	cd/m2
L_0~180 (65) av	5569
L_0~180 (75) av	4186
L_0~180 (85) av	1642
L_90~270 (65) av	5584
L_90~270 (75) av	5173
L_90~270 (85) av	3357
L_45 (65) av	5524
L_45 (75) av	5244
L_45 (85) av	3323

Standard: GB/T 29293-2012

C Range: 0 - 360DEG
C Interval: 15.0DEG
Test Speed: HIGH
Temperature:25DEG
Operators:SENPU
Test Date:2025-06-21

γ Range: 0 - 100DEG
γ Interval: 1.0DEG
Test System:EVERFINE GO-2000B_V1 SYSTEM V2.00.444
Humidity:61%
Test Distance:8.000m [K=1.0000]
Remarks:

Planar Illuminance Curve



C Range: 0 - 360DEG
C Interval: 15.0DEG
Test Speed: HIGH
Temperature:25DEG
Operators:SENPU
Test Date:2025-06-21

γ Range: 0 - 100DEG
 γ Interval: 1.0DEG
Test System:EVERFINE GO-2000B_V1 SYSTEM V2.00.444
Humidity:61%
Test Distance:8.000m [K=1.0000]
Remarks:

LUMINOUS DISTRIBUTION INTENSITY DATA

Test:U:24.00V I:0.102A P:2.45W PF:1.000 Freq:0Hz Lamp Flux:139.876x1 lm		
NAME: DE12CTWWS-2700K	TYPE:	WEIGHT:
SPEC.:	DIM.:	SERIAL No.: 2025062303
MFR.:	SUR.:	Shielding Angle:

Table--1

UNIT: cd

C (DEG) γ (DEG)	0	15	30	45	60	75	90	105	120	135	150	165	180	195	210	225	240	255	270
0	281	280	280	280	280	280	280	280	280	280	280	280	281	280	280	280	280	280	280
5	271	273	273	275	275	276	276	276	275	274	272	271	266	262	262	258	259	256	258
10	239	243	242	245	244	247	245	248	245	246	242	241	230	224	223	218	218	214	217
15	191	195	192	196	194	198	196	200	197	200	195	195	183	177	175	170	170	165	167
20	135	138	136	140	138	142	141	145	143	146	142	143	131	126	126	121	121	117	118
25	87.8	90.5	89.4	92.6	91.9	95.6	95.1	97.9	95.8	97.2	93.9	94.6	85.2	81.0	81.1	77.6	77.9	74.5	75.7
30	51.0	53.6	53.2	56.6	55.8	58.2	56.8	59.2	57.1	58.7	55.9	56.3	48.8	46.0	46.5	44.1	44.4	42.0	42.6
35	23.2	25.2	24.7	26.8	25.4	26.5	25.0	26.5	25.4	27.1	26.5	27.6	23.5	22.6	22.9	21.7	21.7	20.1	20.1
40	9.74	10.2	9.89	10.3	10.1	10.6	10.3	10.7	10.4	11.0	10.9	11.8	10.5	10.4	10.6	10.1	10.1	9.51	9.50
45	5.49	5.57	5.62	5.68	5.83	5.84	5.75	5.82	5.70	5.81	5.80	6.11	5.63	5.62	5.69	5.48	5.53	5.36	5.36
50	3.69	3.67	3.66	3.67	3.73	3.75	3.91	3.78	3.78	3.78	3.81	3.86	3.67	3.69	3.68	3.66	3.64	3.63	3.58
55	2.72	2.67	2.72	2.68	2.76	2.74	2.83	2.79	2.83	2.77	2.84	2.81	2.69	2.73	2.71	2.70	2.65	2.66	2.60
60	2.08	2.04	2.11	2.05	2.15	2.10	2.22	2.14	2.22	2.14	2.21	2.15	2.06	2.14	2.05	2.08	2.00	2.03	1.95
65	1.68	1.64	1.70	1.65	1.73	1.70	1.82	1.75	1.78	1.73	1.78	1.71	1.61	1.67	1.58	1.61	1.52	1.58	1.48
70	1.30	1.23	1.32	1.25	1.36	1.34	1.43	1.36	1.45	1.37	1.43	1.35	1.25	1.30	1.20	1.26	1.16	1.21	1.11
75	0.72	0.87	0.99	0.93	1.05	0.98	1.08	1.04	1.12	1.07	1.12	0.93	0.80	0.97	0.87	0.92	0.82	0.89	0.79
80	0.28	0.53	0.68	0.64	0.72	0.64	0.74	0.68	0.78	0.71	0.79	0.32	0.18	0.59	0.55	0.61	0.52	0.60	0.51
85	0.16	0.17	0.23	0.16	0.21	0.17	0.26	0.23	0.34	0.31	0.40	0.17	0.04	0.23	0.16	0.23	0.15	0.25	0.15
90	0.10	0.11	0.10	0.11	0.10	0.10	0.10	0.11	0.11	0.12	0.12	0.13	0.00	0.01	0.00	0.00	0.00	0.01	0.00
95	0.10	0.11	0.10	0.12	0.12	0.11	0.10	0.12	0.11	0.13	0.12	0.12	0.00	0.01	0.00	0.00	0.00	0.00	0.00
100	0.10	0.10	0.11	0.12	0.11	0.11	0.13	0.12	0.12	0.13	0.12	0.13	0.00	0.00	0.00	0.00	0.00	0.00	0.00
105	0.00	0.00	0.00	0.00	0.00	0.00	0.00	0.00	0.00	0.00	0.00	0.00	0.00	0.00	0.00	0.00	0.00	0.00	0.00
110	0.00	0.00	0.00	0.00	0.00	0.00	0.00	0.00	0.00	0.00	0.00	0.00	0.00	0.00	0.00	0.00	0.00	0.00	0.00
115	0.00	0.00	0.00	0.00	0.00	0.00	0.00	0.00	0.00	0.00	0.00	0.00	0.00	0.00	0.00	0.00	0.00	0.00	0.00
120	0.00	0.00	0.00	0.00	0.00	0.00	0.00	0.00	0.00	0.00	0.00	0.00	0.00	0.00	0.00	0.00	0.00	0.00	0.00
125	0.00	0.00	0.00	0.00	0.00	0.00	0.00	0.00	0.00	0.00	0.00	0.00	0.00	0.00	0.00	0.00	0.00	0.00	0.00
130	0.00	0.00	0.00	0.00	0.00	0.00	0.00	0.00	0.00	0.00	0.00	0.00	0.00	0.00	0.00	0.00	0.00	0.00	0.00
135	0.00	0.00	0.00	0.00	0.00	0.00	0.00	0.00	0.00	0.00	0.00	0.00	0.00	0.00	0.00	0.00	0.00	0.00	0.00
140	0.00	0.00	0.00	0.00	0.00	0.00	0.00	0.00	0.00	0.00	0.00	0.00	0.00	0.00	0.00	0.00	0.00	0.00	0.00
145	0.00	0.00	0.00	0.00	0.00	0.00	0.00	0.00	0.00	0.00	0.00	0.00	0.00	0.00	0.00	0.00	0.00	0.00	0.00
150	0.00	0.00	0.00	0.00	0.00	0.00	0.00	0.00	0.00	0.00	0.00	0.00	0.00	0.00	0.00	0.00	0.00	0.00	0.00
155	0.00	0.00	0.00	0.00	0.00	0.00	0.00	0.00	0.00	0.00	0.00	0.00	0.00	0.00	0.00	0.00	0.00	0.00	0.00
160	0.00	0.00	0.00	0.00	0.00	0.00	0.00	0.00	0.00	0.00	0.00	0.00	0.00	0.00	0.00	0.00	0.00	0.00	0.00
165	0.00	0.00	0.00	0.00	0.00	0.00	0.00	0.00	0.00	0.00	0.00	0.00	0.00	0.00	0.00	0.00	0.00	0.00	0.00
170	0.00	0.00	0.00	0.00	0.00	0.00	0.00	0.00	0.00	0.00	0.00	0.00	0.00	0.00	0.00	0.00	0.00	0.00	0.00
175	0.00	0.00	0.00	0.00	0.00	0.00	0.00	0.00	0.00	0.00	0.00	0.00	0.00	0.00	0.00	0.00	0.00	0.00	0.00
180	0.00	0.00	0.00	0.00	0.00	0.00	0.00	0.00	0.00	0.00	0.00	0.00	0.00	0.00	0.00	0.00	0.00	0.00	0.00

C Range: 0 - 360DEG
C Interval: 15.0DEG
Test Speed: HIGH
Temperature:25DEG
Operators:SENPU
Test Date:2025-06-21

γ Range: 0 - 100DEG
γ Interval: 1.0DEG
Test System:EVERFINE GO-2000B_V1 SYSTEM V2.00.444
Humidity:61%
Test Distance:8.000m [K=1.0000]
Remarks:

LUMINOUS DISTRIBUTION INTENSITY DATA

Test:U:24.00V I:0.102A P:2.45W PF:1.000 Freq:0Hz Lamp Flux:139.876x1 lm		
NAME: DE12CTWWS-2700K	TYPE:	WEIGHT:
SPEC.:	DIM.:	SERIAL No.: 2025062303
MFR.:	SUR.:	Shielding Angle:

Table--2

UNIT: cd

C (DEG) γ (DEG)	285	300	315	330	345														
0	280	280	280	280	280														
5	257	260	260	264	264														
10	214	220	220	227	228														
15	165	170	171	178	179														
20	117	120	121	125	125														
25	74.3	77.2	77.2	80.5	79.7														
30	41.5	44.0	43.3	45.3	44.2														
35	19.0	19.8	19.3	20.0	19.6														
40	9.10	9.19	8.96	9.03	8.71														
45	5.23	5.29	5.19	5.20	5.08														
50	3.58	3.55	3.54	3.50	3.51														
55	2.63	2.59	2.62	2.58	2.61														
60	2.01	1.94	2.01	1.93	2.01														
65	1.55	1.47	1.55	1.48	1.58														
70	1.19	1.11	1.19	1.12	1.20														
75	0.87	0.78	0.87	0.77	0.64														
80	0.58	0.51	0.56	0.45	0.29														
85	0.18	0.09	0.11	0.03	0.05														
90	0.01	0.00	0.01	0.00	0.02														
95	0.01	0.00	0.01	0.00	0.02														
100	0.00	0.00	0.00	0.00	0.02														
105	0.00	0.00	0.00	0.00	0.00														
110	0.00	0.00	0.00	0.00	0.00														
115	0.00	0.00	0.00	0.00	0.00														
120	0.00	0.00	0.00	0.00	0.00														
125	0.00	0.00	0.00	0.00	0.00														
130	0.00	0.00	0.00	0.00	0.00														
135	0.00	0.00	0.00	0.00	0.00														
140	0.00	0.00	0.00	0.00	0.00														
145	0.00	0.00	0.00	0.00	0.00														
150	0.00	0.00	0.00	0.00	0.00														
155	0.00	0.00	0.00	0.00	0.00														
160	0.00	0.00	0.00	0.00	0.00														
165	0.00	0.00	0.00	0.00	0.00														
170	0.00	0.00	0.00	0.00	0.00														
175	0.00	0.00	0.00	0.00	0.00														
180	0.00	0.00	0.00	0.00	0.00														

C Range: 0 - 360DEG
 C Interval: 15.0DEG
 Test Speed: HIGH
 Temperature:25DEG
 Operators:SENPU
 Test Date:2025-06-21

γ Range: 0 - 100DEG
 γ Interval: 1.0DEG
 Test System:EVERFINE GO-2000B_V1 SYSTEM V2.00.444
 Humidity:61%
 Test Distance:8.000m [K=1.0000]
 Remarks: